

Operation Information

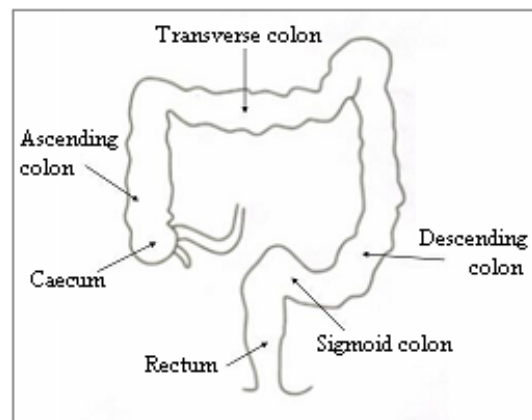
Sigmoidoscopy

Introduction

Sigmoidoscopy is a procedure that enables the examiner to view the inside of sigmoid colon. This is accomplished by passing a flexible video-endoscope through the anus into the rectum, then advancing slowly to the sigmoid colon. The examiner can have direct vision of the sigmoid colon or pathological change inside the sigmoid colon, such as tumor or ulceration. Doctor may take biopsy for pathological examination and therapeutic haemostasis when necessary.

Why is Sigmoidoscopy performed?

1. Blood in stool
2. Chronic diarrhoea
3. Constipation
4. Change in the bowel habits
5. Polyps
6. Tumors



Procedure

1. Patient has to lie on his left side with both knees bending towards his chest.
2. Doctor may prescribe sedation or anesthetic medication according to patient's condition.
3. Doctor will pass the colonoscope through the anus into the sigmoid colon. It is normal to feel mild abdominal distension and urging of bowel during the procedure.
4. The procedure usually takes about 15 minutes

Possible Risks and Complications

Before examination

- Laxative for bowel preparation may cause nausea, vomiting, abdominal pain or distension, etc.

During examination

- Injection of sedation may cause hypotension, respiratory difficulties. For severe cases, anaphylaxis and anaphylactic shock may be developed. The probability of developing such symptoms is higher for the elderly.
- Perforation (2:1000); The probability of developing major complications is higher for those clients who need to have therapeutic procedure (e.g. endoscopic haemostasis and dilatation).
- Perforation of bowel leading to peritonitis. Laparotomy under general anaesthesia may be required for repair or resection of bowel. The death rate is 5 in 100.

After examination

- May experience abdominal pain or distension etc. It will improve about one hour after examination.

Pre-operation Preparation

1. Your doctor will explain to you the reason for conducting sigmoidoscopy, the procedure and possible complications. Patient will need to sign the consent form.
2. Sigmoidoscopy can be conducted as an out-patient or in-patient. Please consult your doctor about the arrangement.
3. Presence of stool inside the bowel will affect the view of the bowel wall. Therefore, the bowel must be cleaned thoroughly before the procedure. Bowel preparation can be carried out at home or in the hospital. Please take the laxative as prescribed by your doctor.
4. On the day of sigmoidoscopy, no oral intake is allowed six hours before sigmoidoscopy.
5. Before the procedure, you are required to change into operation gown, remove all jewelry, metallic accessories and denture etc (please prepare contact lens container if necessary).

Post-operation Instruction

1. After sigmoidoscopy, patient should stay in bed until the sedative effect of drug has been completely worn off. It usually takes 3 – 4 hours.

For Out-patient

For your safety, please arrange a responsible adult to stay with you when you leave the hospital. If there is no companion, recovery bed has to be arranged for you after the procedure (additional charge for observation will be levied).

2. As doctor will pump air into the colon to enhance the visualization, it is normal to pass gases after the sigmoidoscopy.
3. If severe abdominal pain or bleeding occurs, medical personnel must be consulted immediately.

Remarks: Should you have any enquiries, please consult your doctor.

Reference

Hospital Authority – Smart Patient (Website: http://www21.ha.org.hk/smartpatient/tc/operationstests_procedures.html)

Compiled by Union Hospital Consent Form Taskforce

The above information is for reference only, please enquire your physician for details
Our Hospital reserves the RIGHT to amend any information in this leaflet without prior notification